

Orb International Enhanced Income - YIELDS2 Summary

Update as of: **30 November 2007**

Issue Date: **6 December 2004**

Maturity Date: **6 December 2010**

Protection First

YIELDS2 offer the potential for quarterly income and capital appreciation through exposure to a selection of high yielding large cap equities, selected from the Dow Jones Global Titans 50SM (DJGT) Index. YIELDS are linked to a Dynamic Portfolio, which provides exposure to a combination of the proprietary Income Plus Trading Strategy and the Bond Portfolio (BP), a synthetic zero coupon bond portfolio. The income generated by YIELDS2 is among other things a function of the allocation to the Strategy. YIELDS2 are 100% capital protected at maturity.

YIELDS2 Return Summary (net of fees)

	3 Month	6 Month	12 Month
ASX Last Traded Price at beginning of Period	\$8.82	\$9.21	\$9.42
ASX Last Traded Price at end of Period	\$8.57	\$8.57	\$8.57
Income Received during the period (ex)	\$0.1310	\$0.2681	\$0.5331
Total return during the period	-1.35%	-4.04%	-3.36%
Cumulative Distribution (a)	1.48%	2.91%	5.66%
Cumulative Annualised Distribution (b)	5.94% p.a.	5.82% p.a.	5.66% p.a.

(a) This represents the Cumulative Distribution over the relevant period. It is Income generated over the period as a percentage of the ASX Last Traded Price at the beginning of the period.

(b) This represents the Annualised Cumulative Distribution over the relevant period. It is the Cumulative Distribution divided by the number of quarters in the relevant period multiplied by 4.

For definitions (i) to (vii) please refer to the footnotes on the following page.

YIELDS2

Exposure Data	30-Nov-07	31-Oct-07	28-Sep-07	31-Aug-07	31-Jul-07	30-Jun-07	31-May-07	30-Apr-07	31-Mar-07	28-Feb-07	31-Jan-07	31-Dec-06
Allocation to Strategy	19%	29%	40%	41%	40%	67%	68%	67%	68%	68%	69%	69%
Dynamic Portfolio Reference (vi)	\$8.75	\$8.67	\$8.83	\$9.02	\$8.82	\$9.13	\$9.31	\$9.20	\$9.26	\$9.37	\$9.57	\$9.53
Uplverage/Deleverage Event	Deleverage	Deleverage	No	No	Deleverage	No	No	No	No	No	No	No
Gap Measure (vii)	24%	18%	16%	21%	18%	16%	18%	16%	18%	19%	23%	23%

Performance Data

ASX Last Traded Price	\$8.60	\$8.57	\$9.00	\$9.12	\$8.82	\$9.50	\$9.38	\$9.21	\$9.30	\$9.55	\$9.57	\$9.49
ASX Bid Price (i)	\$8.60	\$8.26	\$9.00	\$9.15	\$8.82	\$9.50	\$9.38	\$9.22	\$9.30	\$9.42	\$9.57	\$9.50
YIELDS Price Return (ii)	4.12%	-8.22%	-1.64%	3.74%	-7.16%	1.28%	1.74%	-0.86%	-1.27%	-1.57%	0.74%	1.39%
Distribution: Amount		\$0.0842			\$0.1310			\$0.1371			\$0.1279	
Ex date		15-Oct-07			13-Jul-07			16-Apr-07			15-Jan-07	
Payment Date		16-Nov-07			16-Aug-07			16-May-07			16-Feb-07	
YIELDS Distribution % (iii)		0.94%			1.48%			1.49%			1.35%	
YIELDS Total Return (ii)	4.12%	-7.29%	-1.64%	3.74%	-5.78%	1.28%	1.74%	0.61%	-1.27%	-1.57%	2.08%	1.39%

Market Data

AUD vs USD	0.8843	0.9267	0.8849	0.8135	0.8566	0.8482	0.8276	0.8323	0.8078	0.7878	0.7745	0.7878
AUD Interest Rate to maturity	7.35%	7.22%	6.90%	6.77%	6.87%	6.85%	6.58%	6.42%	6.47%	6.27%	6.42%	6.42%

The Income Plus Strategy is based on a proprietary trading model that seeks to offer income and the potential for capital appreciation through exposure to global equity markets. Each year, the Strategy selects a portfolio of 30 high yielding stocks from the Dow Jones Global Titans 50SM (DJGT) Index. Further yield enhancement is achieved by writing quarterly covered call options on each of the stocks within the Strategy.

AUD Income Plus Strategy Performance (c)

	30-Nov-07	31-Oct-07	28-Sep-07	31-Aug-07	31-Jul-07	30-Jun-07	31-May-07	30-Apr-07	30-Mar-07	28-Feb-07	31-Jan-07	31-Dec-06
AUD Strategy Price Return	1.15%	-4.28%	-5.05%	5.04%	-5.93%	-2.48%	2.03%	-0.99%	-1.39%	-3.29%	0.62%	2.35%
AUD Strategy Yield		2.41%			2.27%			2.19%			1.95%	
AUD Strategy Total Return	1.15%	-1.87%	-5.05%	5.04%	-3.66%	-2.48%	2.03%	1.20%	-1.39%	-3.29%	2.57%	2.35%
AUD DJGT Price Return	1.12%	-2.80%	-4.37%	6.17%	-6.29%	-2.62%	2.48%	1.52%	-1.68%	-4.94%	2.15%	2.25%

(c) Return figures are calculated as a % change over the period, include income distributed by the Strategy and assume no reinvestment over life. (N.B. The % coupon paid on YIELDS2 is not the same as the % income distributed by the Strategy as the coupon is among other things a function of the allocation to the Strategy). Yield is based on value of Strategy as of beginning of period.



AUD Income Plus Strategy Performance

Update as of: 30 November 2007

Protection First

The Income Plus Strategy is based on a proprietary trading model that seeks to offer income and the potential for capital appreciation through exposure to global equity markets. Each year, the Strategy selects a portfolio of 30 high yielding stocks from the Dow Jones Global Titans 50SM (DJGT) Index. Further yield enhancement is achieved by writing quarterly covered call options on each of the stocks within the Strategy. The call option overwriting is intended to help the Strategy outperform a direct investment in the underlying portfolio of stocks in all but strong bull market scenarios.

Performance Table ⁽¹⁾

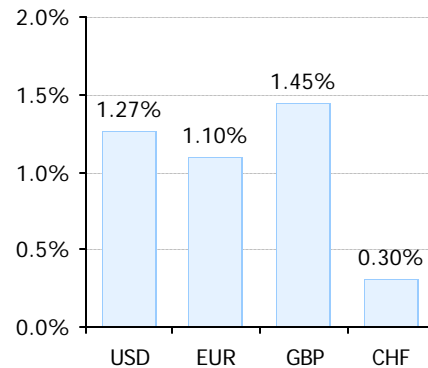
Performance Table	MoM	Year to date	Since Jul 03
AUD Strategy Price Return	1.15%	-14.11%	-12.55%
AUD Strategy Total Return	1.15%	-5.78%	23.66%
AUD Strategy Yield	0.00%	8.33%	36.21%
AUD DJGT Price Return	1.12%	-6.49%	11.32%

In November, the Strategy value appreciated leading to a positive month-on-month price performance of 1.15%. The equivalent price return for the DJGT index was 1.12% month-on-month. Last month, Healthcare and Consumer Noncyclical traded up, whilst Technology remained flat and Financial, Energy, Industrial and Telecommunications traded down. The overall effect (excluding FX) of the sector performances on the Strategy was negative. The Strategy benefited from a strengthening of the USD, EUR, GBP and CHF against the AUD over the past month. Overall the currencies had a positive net effect on the Strategy performance.

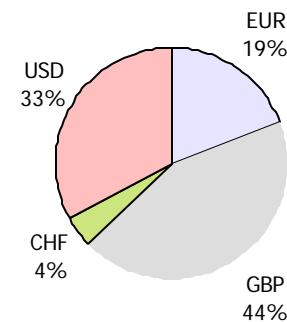
Top-10 Holdings ⁽⁴⁾

Company	Sector	Currency	Country
AT&T	Telecommunications	USD	US
Barclays	Financial	GBP	UK
ENI	Energy	EUR	IT
HBOS	Financial	GBP	UK
HSBC Holdings	Financial	GBP	UK
Merck & Co.	Healthcare	USD	US
Pfizer	Healthcare	USD	US
Royal Bank of Scotland	Financial	GBP	UK
Verizon Communications	Telecommunications	USD	US
Vodafone	Telecommunications	GBP	UK

MoM Currency Impact within Strategy ⁽²⁾

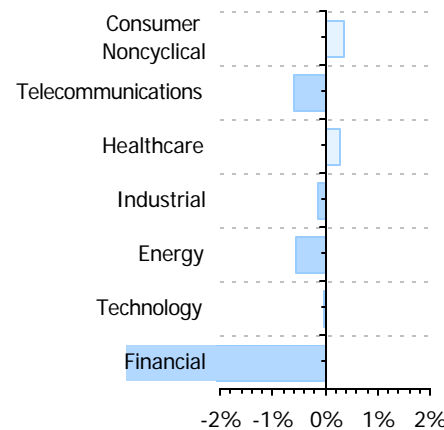


Currency Distribution ⁽³⁾

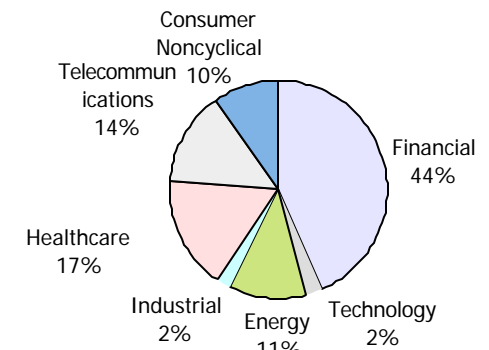


Past performance is not a reliable guide to future

MoM Sector Returns within Strategy ⁽⁵⁾



Sector Distribution ⁽⁶⁾



(1) Return figures are calculated as a % change over the period, include income distributed by the Strategy and assume no reinvestment over life. (N.B. The % coupon paid on the Note is not the same as the % income distributed by the Strategy as the coupon is among other things a function of the allocation to the Strategy). Yield is based on value of Strategy as of beginning of period. (2) Percentage change of each currency holdings within Strategy versus AUD over the past month, using currency weightings as of end of month. (3) Breakdown as of beginning of month using live weights and prevailing exchange rates and showing the exposure of the Strategy holding to the currencies listed. (4) Top ten holdings shown alphabetically as of last rebalancing (5) Price performance showing sector returns as measured in the stocks' respective local currencies over the past month, using live weights as of beginning of month. (6) Breakdown as of beginning of month using live weights reflecting the relative value of each stock/sector as of that time in percentage of the value of the total Strategy holding. MoM means month on month change. All figures are calculated using month end data unless otherwise stated. Source: Citigroup Global Markets Limited

Orb International Enhanced Income - YIELDS2

Update as of: 30 November 2007

Issue Date: 06 December 2004

Maturity Date: 06 December 2010

Protection First

YIELDS2 offer the potential for quarterly income and capital appreciation through exposure to a selection of high yielding large cap equities, selected from the Dow Jones Global Titans 5 Index. YIELDS2 are linked to a Dynamic Portfolio, which provides exposure to a combination of the proprietary Income Plus Trading Strategy and the Bond Portfolio (BP), a synthetic zer portfolio. YIELDS2 are 100% capital protected at maturity.

Overview

	30-Nov-07	29-Dec-06	06-Dec-04
YIELDS Value			
ASX Bid Price (i)	8.60	9.50	9.64
ASX Last Traded Price	8.60	9.49	na
Performance Summary	MoM	Year to date	Since Dec 04
YIELDS2 Total Return (ii)	4.12%	-4.33%	7.63%
YIELDS2 Price Return (ii)	4.12%	-9.47%	-10.79%
YIELDS2 Distribution (iii)	0.00%	5.14%	18.42%
AUD Distribution collected to date (iv)	0.0	0.49 (paid)	1.78 (paid)

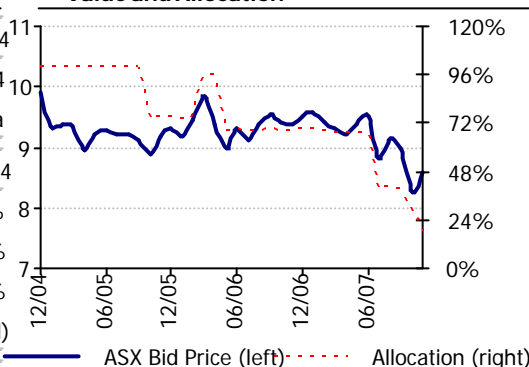
	MoM	Year to date	Since Dec 04
Market Data			
AUD DJGT Price Return (ii)	1.12%	-6.49%	10.95%
AUD Strategy Total Return (ii)	1.15%	-5.78%	16.44%

	30-Nov-07	29-Dec-06	06-Dec-04
Market Data (cont.)			
YIELDS2 Currency vs. AUD	0.8843	0.7878	0.7800
AUD Interest Rate to Maturity	7.35%	6.42%	5.51%

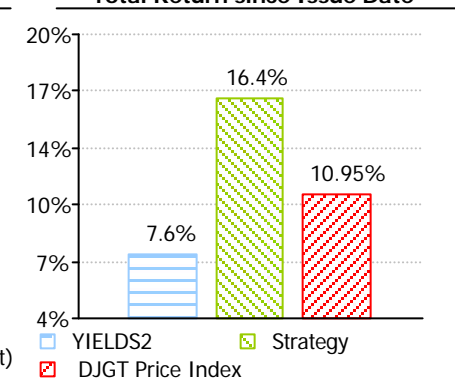
	30-Nov-07	31-Oct-07	28-Sep-07
Performance Attribution (v)			
Citigroup Bid Price	8.493	8.522	8.685
Strategy Monthly change in AUD	**	**	-0.189
BP Monthly Change in AUD	**	**	-0.004
Bid Price Change in AUD	-0.03	-0.163	-0.194

	30-Nov-07	31-Oct-07	28-Sep-07
Dynamic Exposure Data			
Dynamic Portfolio Reference (vi)	8.64	8.67	8.83
Allocation to Strategy	19%	29%	40%
Upleverage/Deleverage Event	Deleverage	Deleverage	No
Gap Measure (% of Note Value) (vii)	24%	18%	16%

Value and Allocation

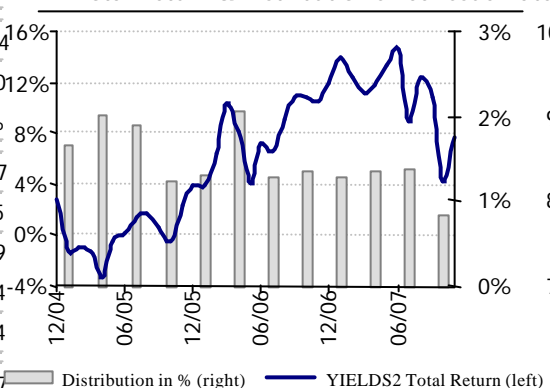


Total Return since Issue Date⁽ⁱ⁾

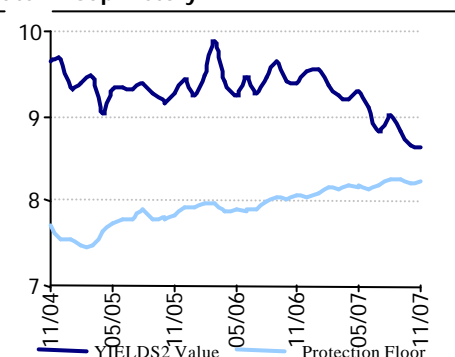


Past performance is not a reliable guide to future results.

Total Return & Distribution since Issue Date⁽ⁱ⁾



Gap History^(vii)



** Estimated breakdown not meaningful because of leverage event intra month

(v) Strategy and BP monthly change are estimates and are calculated using beginning and end of month Citigroup bid prices and allocations to the Strategy. (vi) The Dynamic Portfolio Reference level is the indicative value of the Net Portfolio Unit NAV as at the respective month end and has been derived from proprietary models that take into consideration estimates about relevant present and future market conditions as well as the size and liquidity of the position and any related actual or potential hedging transactions. It is for indicative purposes only and subject change. (vii) If the Gap measure rises above 25% (of the YIELDS2 Value), an "up-leverage" event will occur; a fall of the Gap measure below 15% would lead to a "de-leverage" event. MoM means month on month change. Figures are calculated using month end data. Charts are based on month end data. Source: Citigroup Global Markets Limited



Disclaimer

Update as of: 30 November 2007

Protection First

This report is made available by Citigroup Global Markets Australia Pty Limited ('CGMA') (ABN 64 003 114 832 AFSL 240992), a Participant of the ASX Group and a Participant of the Sydney Futures Exchange Limited. It has been prepared by the Strategy Sponsor of YIELDS2, Citigroup Global Markets Limited ('CGML'), for information purposes only and is subject to change without notice. Although the information contained herein has been obtained from sources believed to be reliable, CGMA and its affiliates ('Citigroup') do not guarantee its accuracy, and such information may be incomplete or condensed. Any prices used are indicative and may not be available when any order is entered. The value of investments mentioned herein and any income, which might accrue from them, may fluctuate and may fall or rise against an investor's interest. All opinions and estimates included in this document constitute judgment of CGML as of the date of this report and are subject to change without notice. Citigroup may from time to time take proprietary positions and/or make a market in instruments identical or economically related to financial products acquired by you, or may have an investment banking or other commercial relationship with and access to information from the issuer(s) of securities, financial products or other interests underlying transactions entered into with you. CGMA may also undertake proprietary activities, including hedging transactions related to the initiation or termination of a transaction with you, that may adversely affect the market price, rate, index or other market factors underlying a transaction entered into with you and consequently the value of the transaction.